

The Wimbledon Foundation Independent Trustee

Candidate Information November 2024



WELCOME

I'm delighted that you're considering the Trustee role at The Wimbledon Foundation.

The Wimbledon Foundation is in a unique position in that it is supported by, and uses the collective strength of, The All England Lawn Tennis Club and The Championships to make a positive difference to people's lives. We are proud to be celebrating our 10-year anniversary this year and to have established a clear vision for the future



The Foundation is committed to creating stronger, healthier and more resilient communities and we are now looking for an inspiring individual to join as a Trustee to bring fresh energy, insight and experience to the Board.

Our mission is to champion opportunity for all and aims locally to strengthen and support our diverse communities, nationally to use the power of sport to inspire young people and internationally to build healthy communities and respond in times of need. The Foundation has grown year on year and in 2024 our charitable activities totalled more than £4.3 million.

Nearly half of our funding is spent supporting charities and local community organisations helping to meet social needs and reduce inequalities in the boroughs of Merton and Wandsworth.

Nationally, our Set for Success programme, in partnership with Barclays and Youth Sport Trust, uses sport to inspire young people in underserved communities around the UK to achieve their full potential.

Internationally, through partnerships with WaterAid and British Red Cross, we are helping to build healthy and resilient communities and provide support in times of need.

We are very conscious of the rise in demand for services and the multiple challenges being faced by local communities and local charities. We want to make sure that the Foundation is working as effectively as possible in all its areas of operation.

The needs and aspirations of people drive our work and we want someone to join us who shares this approach, has a deep understanding of the social needs that face some of our most underserved communities in London and an understanding of grant making in these situations. This is a very exciting role at an important time for the Foundation, and presents a great opportunity for personal and professional fulfilment.

I look forward to receiving your application.

A handwritten signature in black ink, reading 'Bruce Weatherill'. The signature is fluid and cursive, with a long horizontal stroke at the end.

Bruce Weatherill
Chairman, The Wimbledon Foundation

ABOUT US

The Wimbledon Foundation, established in 2013, is the official charity of the All England Lawn Tennis Club and The Championships. Our aim is to use the collective strength of Wimbledon to make a positive difference to people's lives in the local community and beyond.

WHAT WE DO



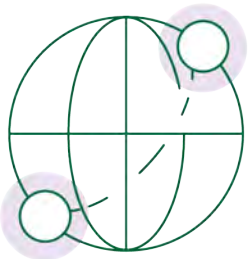
Locally we strengthen and support our diverse communities

Tackling social disadvantage in Merton and Wandsworth to support vibrant and inclusive communities where there are more opportunities, health and wellbeing is improved, people can take part in sport and have their needs met in emergency situations. Leveraging AELTC resources to create opportunities and benefits for the local community.



Nationally we use the power of sport to inspire young people

Increasing opportunities for young people to develop key skills and raise their aspirations for the future using the power of sport.



Internationally we build healthy communities and respond in times of need

Increasing healthy communities globally by partnering with impactful charity partners and contributing to resources to respond to emergency situations and global disasters.



HOW WE DO IT



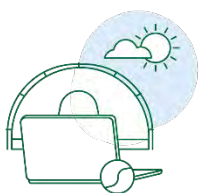
Funding

We provide grants and financial support



In-Kind Support

We donate resources and physical gifts



Programmes

We deliver programmes for our local community

Our Vision

Stronger, healthier, and more resilient communities

Our Mission

To champion opportunity for all

Our Values

Heritage, Integrity, Respect and Excellence

ANNUAL REVIEW 2024

Our Annual Review provides a wealth of information about the Foundation and what we have achieved to date. Click on the image opposite to read more.



THE ROLE

Are you passionate about helping build stronger, healthier and more resilient communities?

Do you have a deep understanding of the social needs being faced by communities in London and the challenges they face in securing funding? Have you got experience or understanding of grant-making?

We are looking to recruit a new independent Trustee with expertise in grant making and an understanding of the needs faced by communities in London and the charitable organisations which support them. This role will help to guide our strategy and support our brilliant staff team. Could you use your skills and experience to add depth and knowledge to our existing Board of Trustees?

This is a key opportunity to help shape delivery of the Foundation's mission to support individuals and communities, particularly in Merton and Wandsworth, through grant-making and community initiatives.

The Board is currently made up of six representatives of the AELTC Club and two Independent Trustees. We are very keen to bring fresh insight, knowledge and experience to support the Board in guiding this wonderful charity on its next phase.

The role of the Board of Trustees is to optimise the charitable benefit in the fulfilment of the Foundation's charitable objectives. To help the charity achieve its strategic plan, the specific duties of the Board are to:

- Help formulate and agree strategy, objectives, and resource allocation for delivery.
- Approve key performance measures, budgets, and policies.
- Provide advice and guidance to the Board on all grant making activities.
- Review the organisation's performance and hold the executive leadership team to account for delivery, through support as well as challenge.
- Ensure there is appropriate consideration and management of risk.
- Collectively with the Board and individually as a Trustee, be an inspirational and charismatic ambassador.
- Ensure compliance with all statutory and regulatory requirements.

The Individual:

All our Trustees have a commitment and a passion for our cause. In addition, to fulfil the responsibilities of the Board of Trustees, they will need to bring:

- Demonstrable integrity and objectivity in decision making and the confidence to have robust conversations.
- A commitment to the work and values of the Foundation, both in the work that it does locally, nationally and internationally and in the time required to serve on the Board of Trustees.

Desired Skills and Experience:

The Board and staff have identified the need for the following key skills that would significantly support the future guidance of the charity:

- Knowledge of the local charity community and social needs in Merton and Wandsworth
- Grant making and funding
- Place-based giving

Terms and Conditions:

- Time commitment up to 2 days a month
- Term: Three years initially but can be extended as Trustees, may serve for a maximum of three consecutive terms of up to three years each;
- This position is unremunerated; however reasonable expenses are eligible for reimbursement (by receipt).

Diversity Commitment:

The Wimbledon Foundation is committed to equity, diversity, and inclusion. We are seeking candidates from a diverse range of backgrounds and lived experiences and welcome candidates of any gender (women, men, or other gender identity). We particularly encourage applications from people with Global Majority backgrounds, individuals from minority communities, people from the LGBTQIA+ communities and those with disabilities. This is a unique opportunity to help guide the Wimbledon Foundation's future direction and make a lasting impact on local communities.

We are open to applicants who have not been a Trustee before, as well as those with Board experience.



HOW TO APPLY

If you are interested in this excellent opportunity, please apply with the following:

- A comprehensive CV, detailing your key achievements.
- A supporting statement, which addresses the criteria in the Person Specification and outlines your motivations for applying.

All applications should be sent to applications@trustees-unlimited.co.uk with your full name and The Wimbledon Foundation in the subject heading.

If you have any difficulty uploading your application or if you would like to have an informal and confidential discussion about the role, alternatively please contact Melissa Baxter:
melissa.baxter@russam.co.uk | 07789 985 229

Closing date for applications: Monday 13th January 2025

Interviews with The Wimbledon Foundation: w/c 27th January 2025 (TBC)

